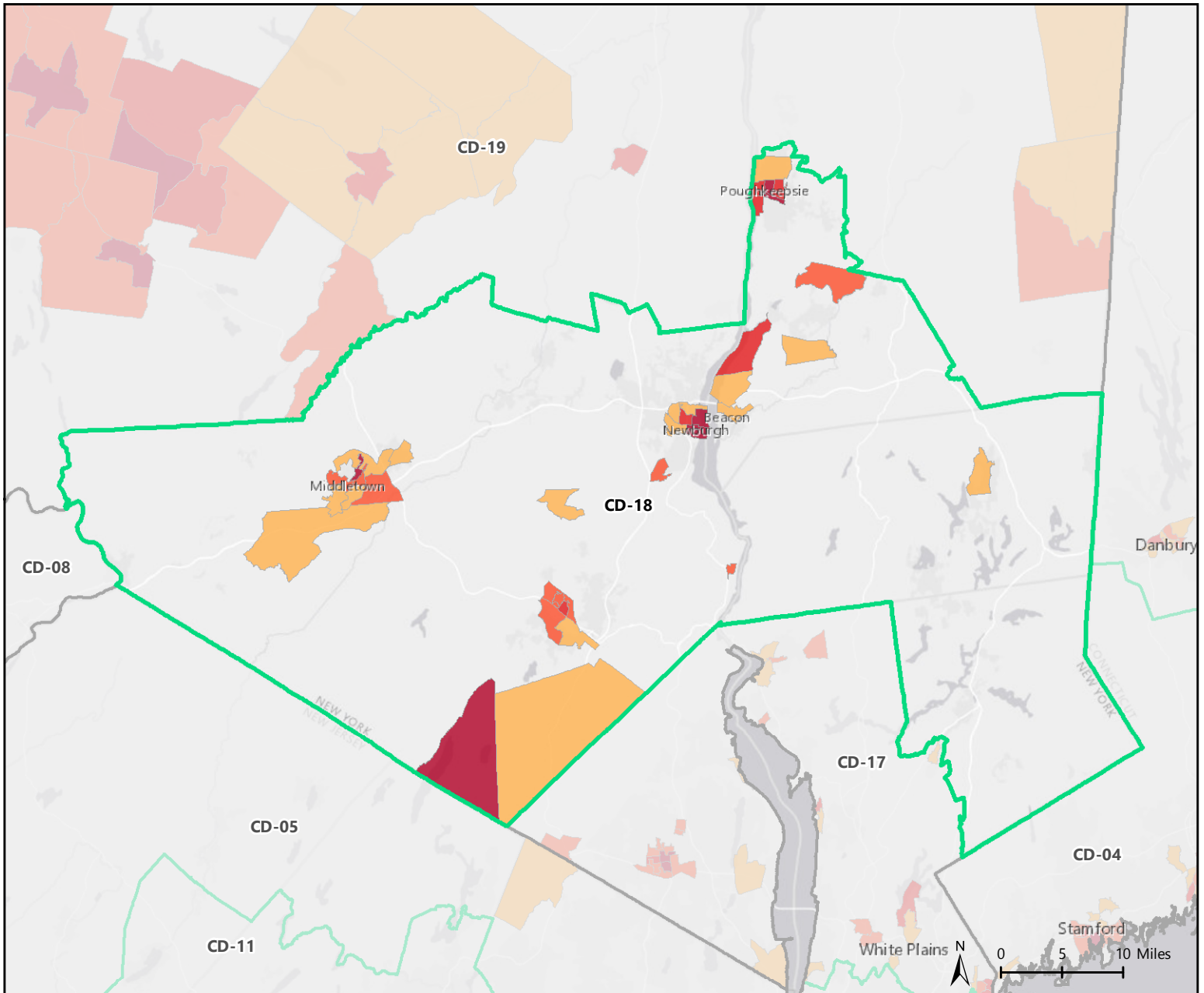


CENSUS 2020

HARD-TO-COUNT COMMUNITIES IN NEW YORK CONGRESSIONAL DISTRICT 18



Hardest to Count (HTC)

Tracts in the Nation

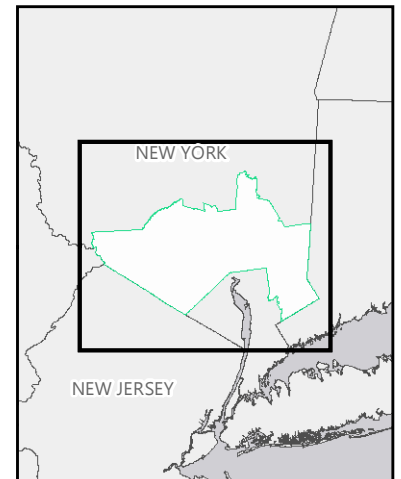
Tracts with 2010 mail return rates of 73% or less (in the bottom 20 percent of return rates nationwide) are shaded on the map. Tracts with >73% return rate are not displayed.

- 0 - 60% mail return rate
 - 61 - 65%
 - 66 - 70%
 - 71 - 73%
- Tracts counted using special Update/Enumerate method; they are hard-to-count but mail return rates not applicable

In the most recent decennial census in 2010, **75.8% of this district's households mailed back their questionnaire, requiring more costly and difficult in-person follow up from the Census Bureau to count the remaining 24.2%** (based on tracts from 2010 in the district's current boundaries).

Based on the latest census estimates, **approximately 24% of the district's current population (or 173,230 people) lives in hard-to-count neighborhoods**, shaded in **light orange to dark red** on the map. These are census tracts where almost a quarter or more households did not mail in their census questionnaire in 2010. Without higher self-response, more households in these and other neighborhoods in District 18 are at risk of being missed in the 2020 census.

In 2020, for the first time the Census Bureau will be urging most households to submit their census responses online via the internet. As recently as 2018, **13% of households in District 18** had no internet subscription, according to the latest American Community Survey estimates.



HTC 2020

Representative's phone number: 202-225-5441

<https://www.CensusHardtoCountMaps2020.us>

Cartography by CUNY Center for Urban Research, 2020.
Data: U.S. Census Bureau; USGS.
Basemap: Esri, HERE, Garmin, OSM.
Created: 1/23/2020